

ELECTRICAL SYSTEMS INTEGRATION

Specialists at our Canadian facility develop hydraulic, electrical and electronic automation controls. The systems are built and programmed in-house, and the automated equipment is function tested before being shipped to the customer's site.

SEQUENCE CONTROL



HMI - HUMAN MACHINE INTERFACE



PLC - PROGRAMMABLE LOGIC CONTROL



VFD - VARIABLE FREQUENCY DRIVES



SYSTEM INTEGRATION FEATURES AND CAPABILITIES

- Automated sequence control.
- Manual operation including full manual control of all functions.
- Custom screen development of HMI panels, Menu and Recipe application.
- HMI panels featuring machine status, trends, alarms, and access to machine parameters.
- Safety systems incorporating safety relays, light curtains, two hand control and dual channel E-stop circuits.
- Experience integrating most recognized brands of PLC's and HMI's.
- Network communication between PLC and peripheral devices.
- Drive applications including, analog or digital control, AC or DC power, speed reference or open loop control.

CUSTOM PANEL BUILDING



PANEL BUILDING FEATURES

- ESA inspection.
- Custom panel assembly in-house by qualified electricians.
- Use of quality, robust components.
- Built to customer equipment and safety specifications.
- Clean space efficient designs.
- Implement the latest hardware and software.
- Completely tested.

TECHNICAL SERVICE SUPPORT

- On site commissioning and start-up.
- Programming assistance.
- Troubleshooting.
- Telephone/modem support.
- Training.

To request further information please call 800-844-8117 or send an email to Tech@BushmanAvonTec.com.

USA

P.O. Box 309
Butler, WI 53007-0309

W133 N4960 Campbell Drive
Menomonee Falls, WI 53051

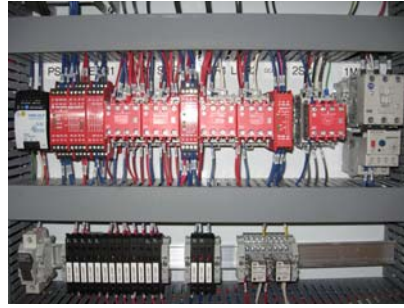
Phone: (800) 388-7810
(262) 790-4200
Fax: (262) 790-4202

CANADA

1680 Brampton Street
Hamilton, ON
Canada L8H 3S1

Phone: (800) 844-8117
(905) 689-7994
Fax: (905) 689-8472

EQUIPMENT UPGRADES



SERVICES TO UPGRADE EXISTING EQUIPMENT

- Replacement of existing relay controls with PLC based controls.
- Upgrade of controls and equipment to comply with health and safety requirements.
- Addition of modern safety devices such as Safety Relays, Two Hand Controls, Light Curtains and dual channel E-stop circuits.